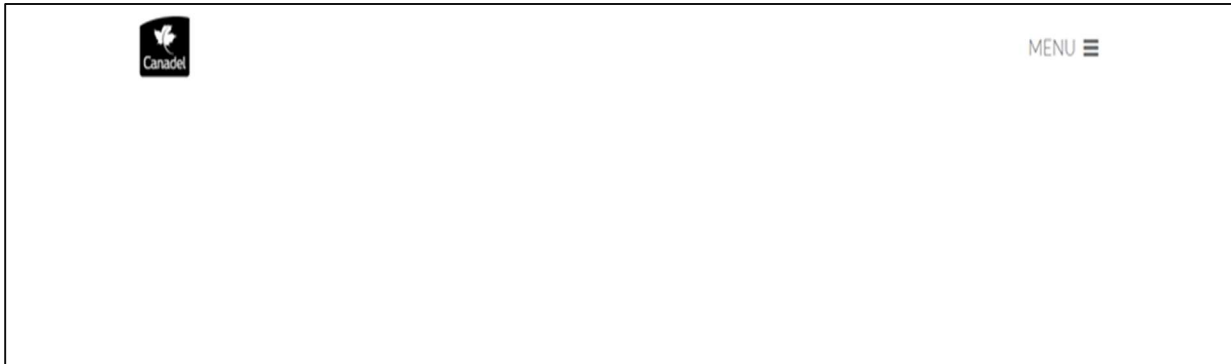


Gallery Computer how to reconnect with UDesign

In order to reconnect with Udesign, you'll need to clear the cookies in the browser.

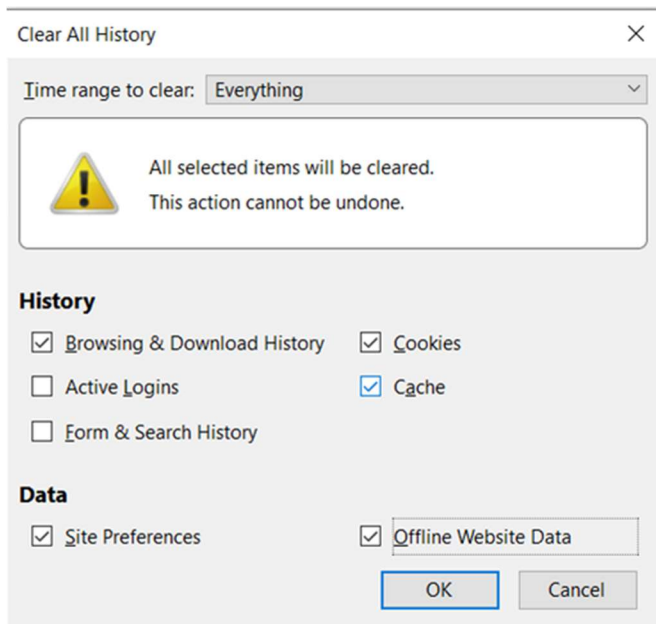
Turn on the computer to see the Canadel page



With the keyboard, hit all at the same time CTRL+SHIFT+DEL

If this window opens:

1. **Select time range to Everything**
2. **Check the boxes shown below**
3. **Hit OK**
4. Then **restart the computer** by holding the on/off button on the device



If this window,

1. In **Time Range** Select **All Time**
2. Check the box **Cookies and other site data**
3. Hit **Clear Data**
4. **Restart your computer**

Clear browsing data

Basic Advanced

Time range: All time ▼

Browsing history
Clears history from all signed-in devices. Your Google Account may have other forms of browsing history at myactivity.google.com.

Cookies and other site data
Signs you out of most sites. You'll stay signed in to your Google Account so your synced data can be cleared.

Cached images and files
Frees up 89.4 MB. Some sites may load more slowly on your next visit.