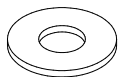


Assembly method for a table with legs

Principe d'assemblage d'une table à pattes

Instrucciones de ensamblaje de una mesa con patas

Do not climb on the table.
Risk of serious injuries.
Ne pas monter sur la table.
Risque de blessures graves.
No treparse sobre la mesa.
Riesgo de herirse gravemente.



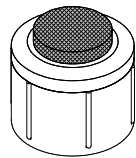
a 8 x



b 8 x

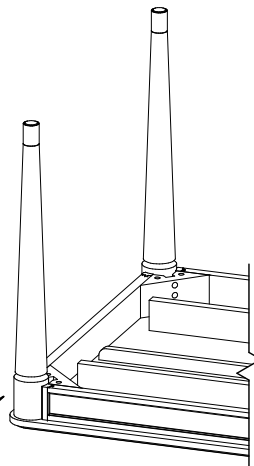
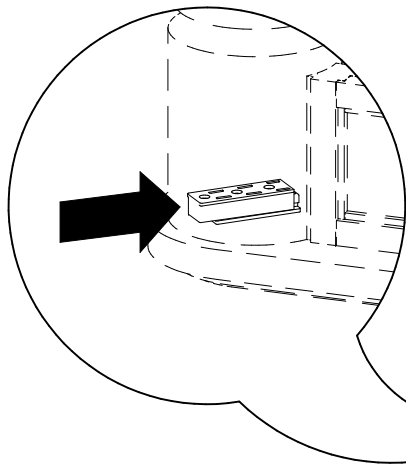
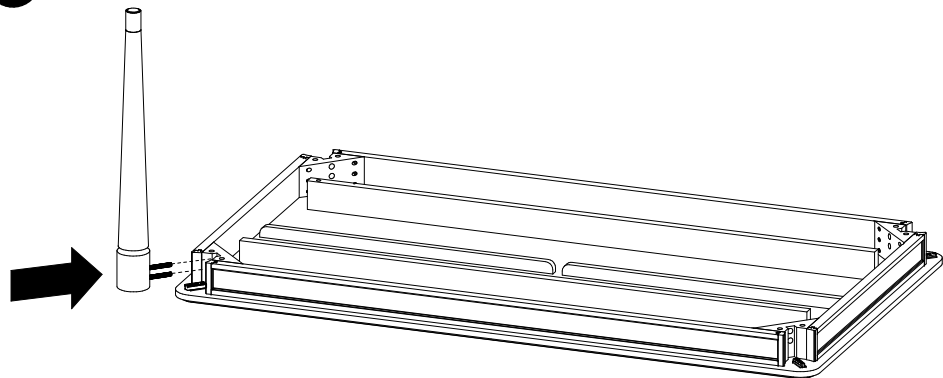


c 8 x



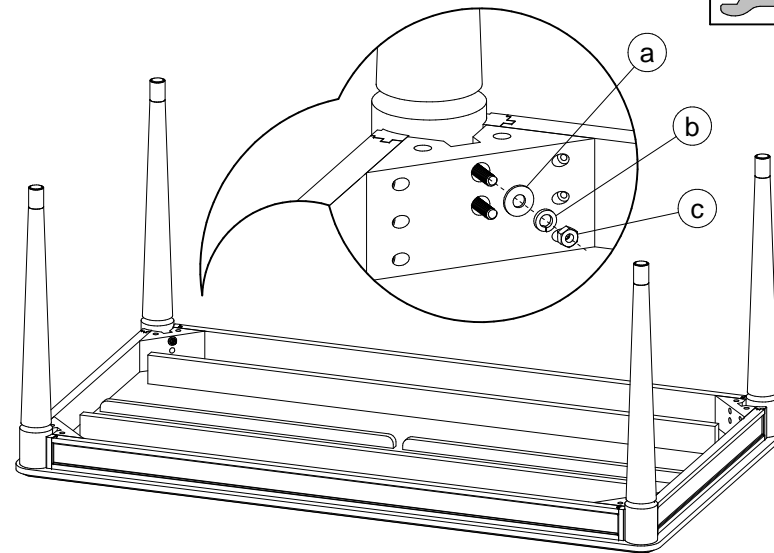
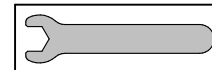
d 4 x

1



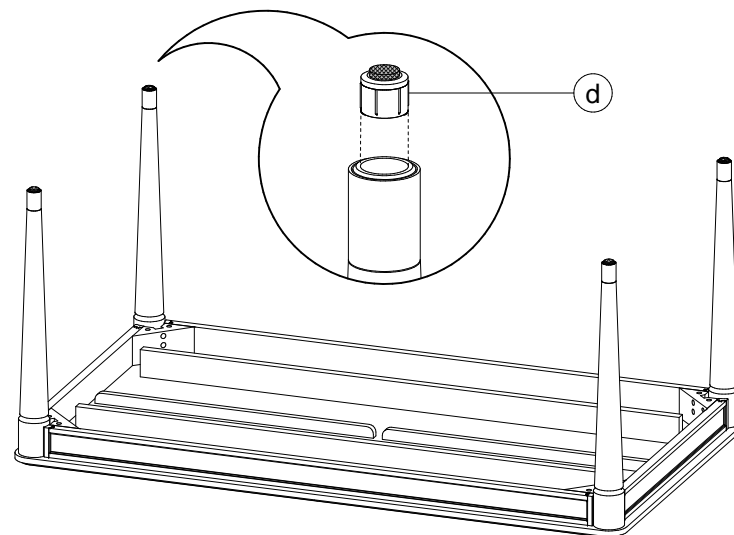
4 x

2



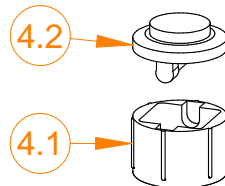
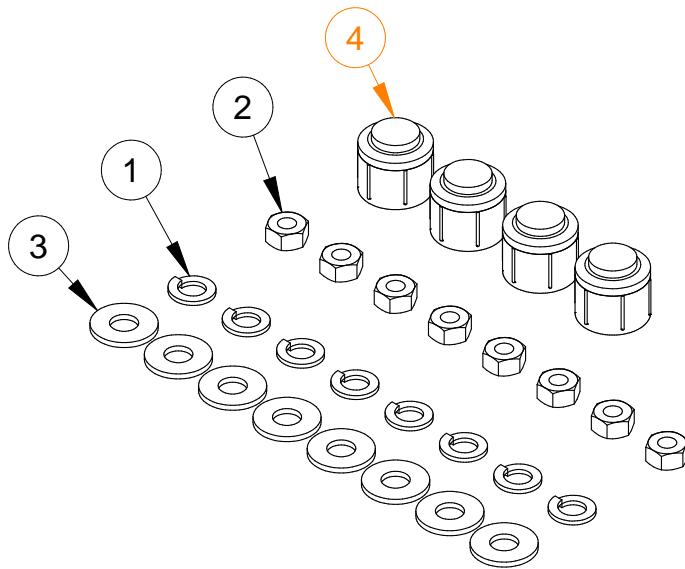
8 x

3



4 x

CODE PRODUIT SAC:	QUI2SACZ084		
CODE PRODUIT INFO-CLIENT:	FOP2INZTAB-1084(À INCLURE DANS LE SAC)		
REVISION:	P01		
NO	DESCRIPTION	NOM	QTÉ
1	LOCK WASHER 5/16 ZINC	FOAVISZLW 5-16	8
2	ECROU 5/16-18 ZINC	FOAVISZHN5-16-18	8
3	WASHER 5/16 (STD) ZINC	FOAVISZWAS3-8H 5-16B	8
4	FEUTRE PÖTTKER ENCASTRÉE Ø25 X16mm N°:16099	QUIACZSPATTE16099	4



SOUS-COMPOSANTES QUIACZSPATTE16099		
NO	DESCRIPTION	QTÉ
4.1	CAISSON	4
4.2	FEUTRE	4

**** PARTICULARITÉ POUR CES ENSEMBLES:**

**VOUS DEVEZ COMMANDER L'ENSEMBLE QUI ARRIVE EN SOUS-COMPOSANTES.
LES PRÉ-ASSEMBLER ET LES METTRE DANS LE SAC SELON LES QUANTITÉS
DEMANDÉES PLUS HAUT.**