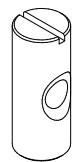


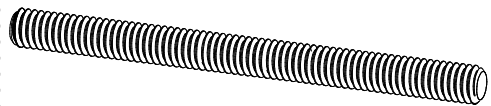
Assembly instructions for double pedestal table

Principe d'assemblage d'une table à base double

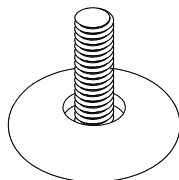
Procedimiento de ensamblaje de una mesa con base doble



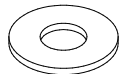
a 12 x



b 12 x



c 4 x



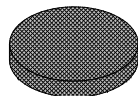
d 6 x



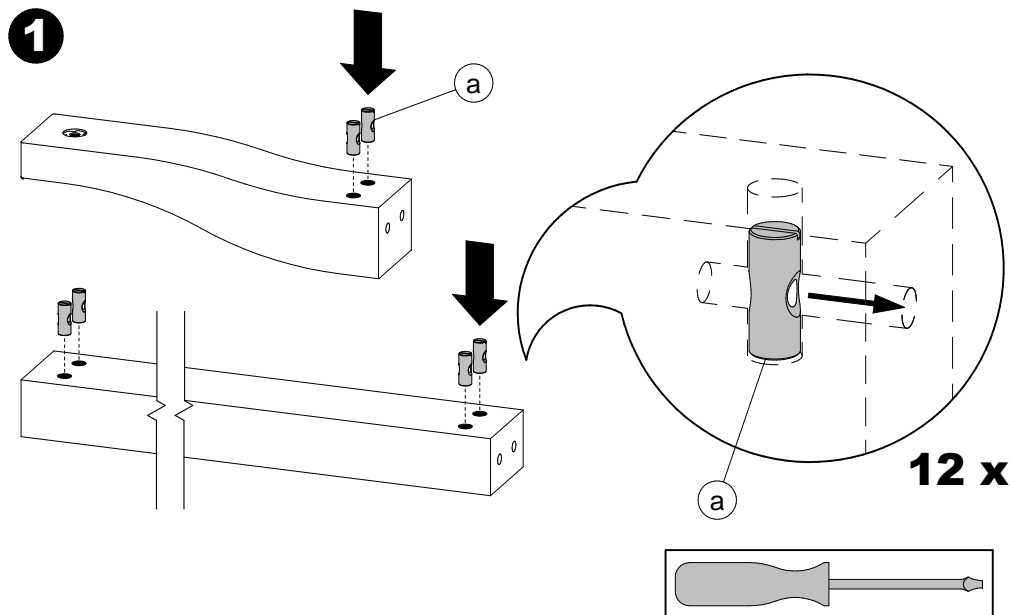
e 12 x



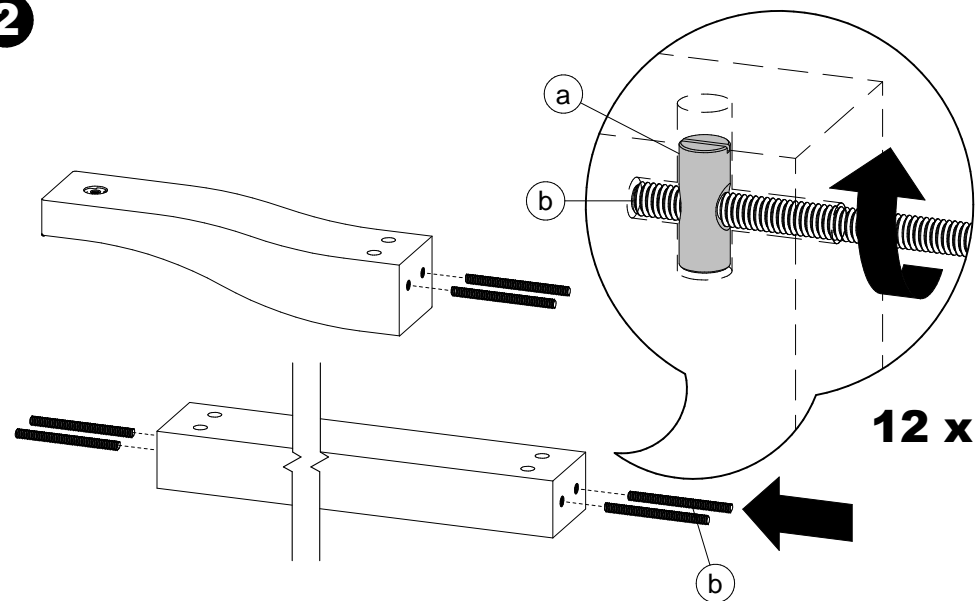
f 18 x



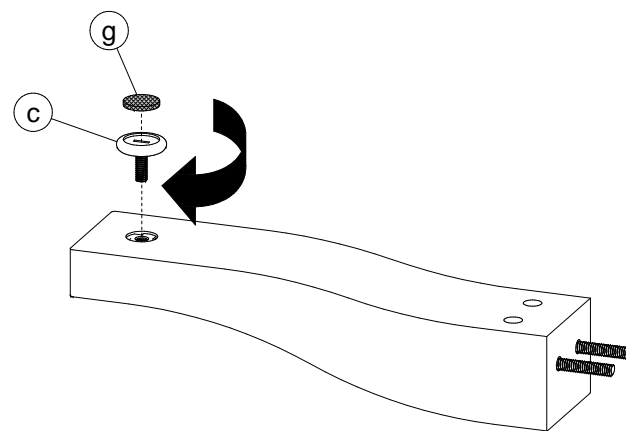
g 4 x



2



3

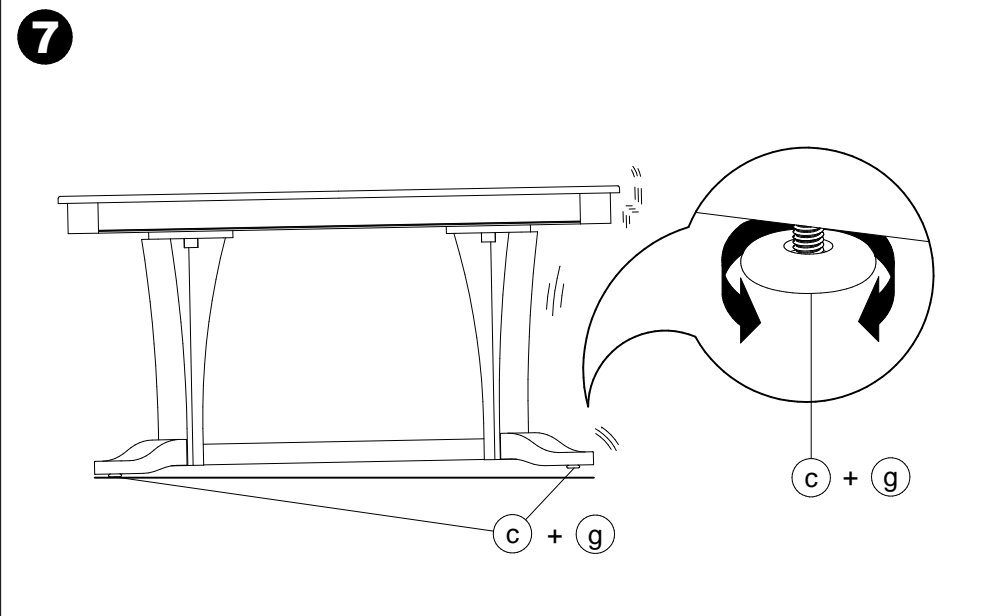
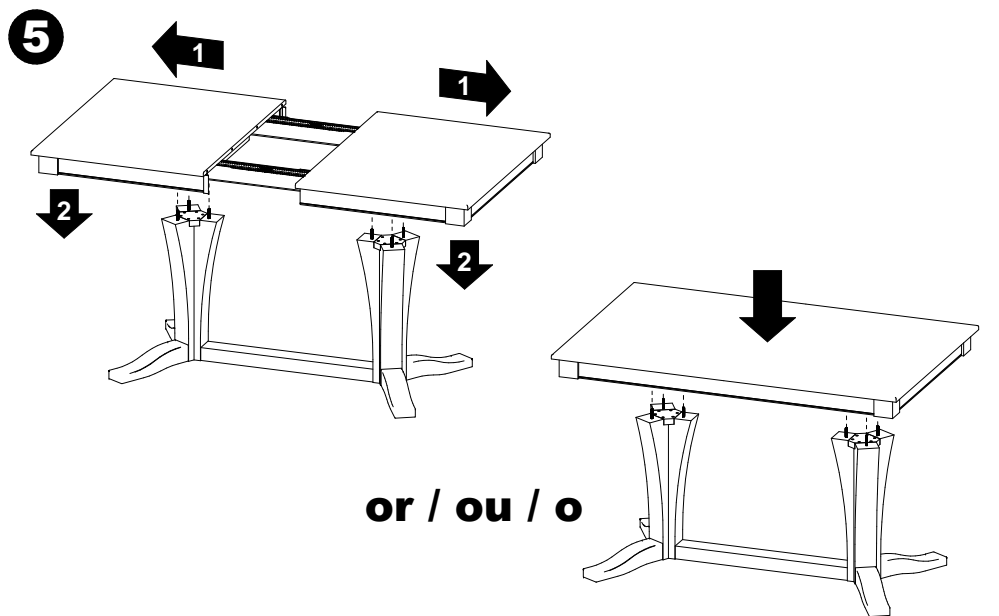
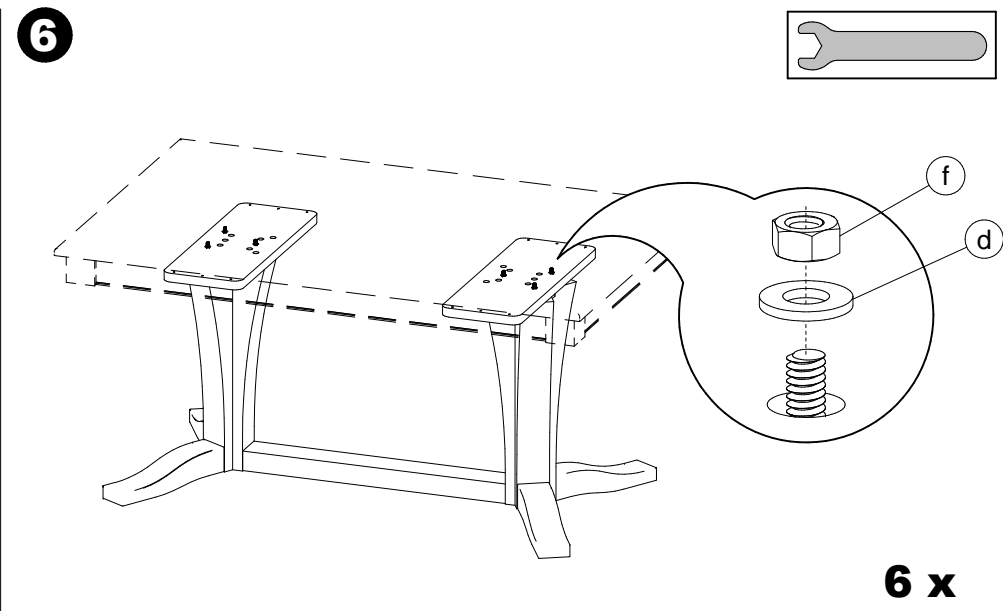
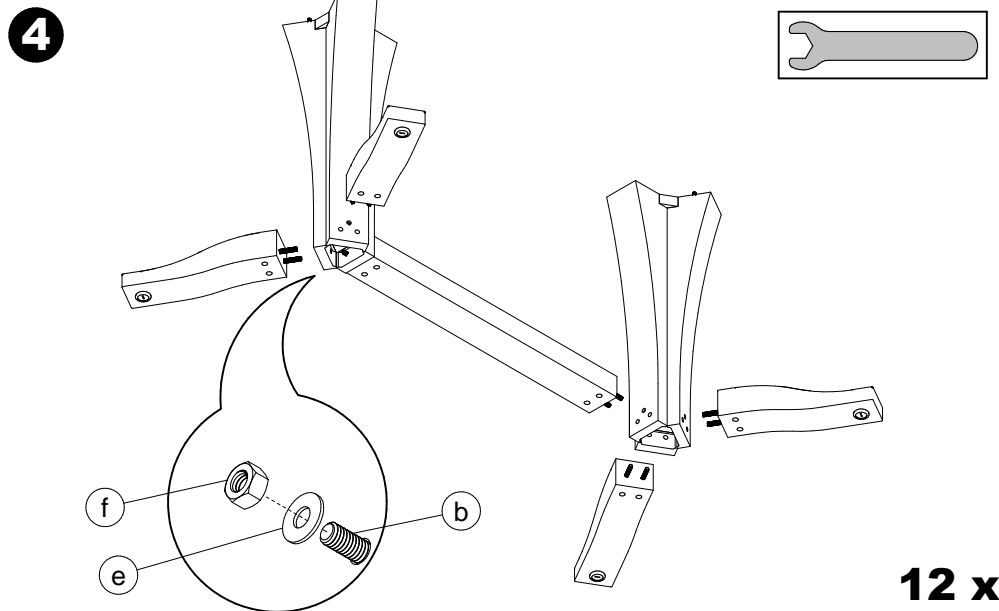


4 x

Assembly instructions for double pedestal table
Principe d'assemblage d'une table à base double
Procedimiento de ensamblaje de una mesa con base doble



Do not climb on the table.
 Risk of serious injuries.
Ne pas monter sur la table.
Risque de blessures graves.
 No treparse sobre la mesa.
 Riesgo de herirse gravemente.



CODE PRODUIT SAC:	QUI2SACZ079	
CODE PRODUIT INFO-CLIENT:	FOP2INZTAB-1079	
REVISION:	P02	
DESCRIPTION	NOM	QTÉ
BARREL NUT 5/16-18 X 30MM	FOAVISZCD5-16-18X30MM	12
ECROU 5/16-18 ZINC	FOAVISZHN5-16-18	18
TIGE FILETÉE 5/16-18 X 3 1/2"	FOAVISZTF5-16-18X3 1-2	12
WASHER METRIQUE M8	FOAVISZWAS-M8	12
WASHER 5/16 (STD) ZINC	FOAVISZWAS3-8H 5-16B	6
NIVELEUR DIA1 3/8"; 5/16-18X7/8"	QUIACCZ00701C	4
FEUTRE COLLANT DIA. 1"	QUIACCZFEUTREV23125	4