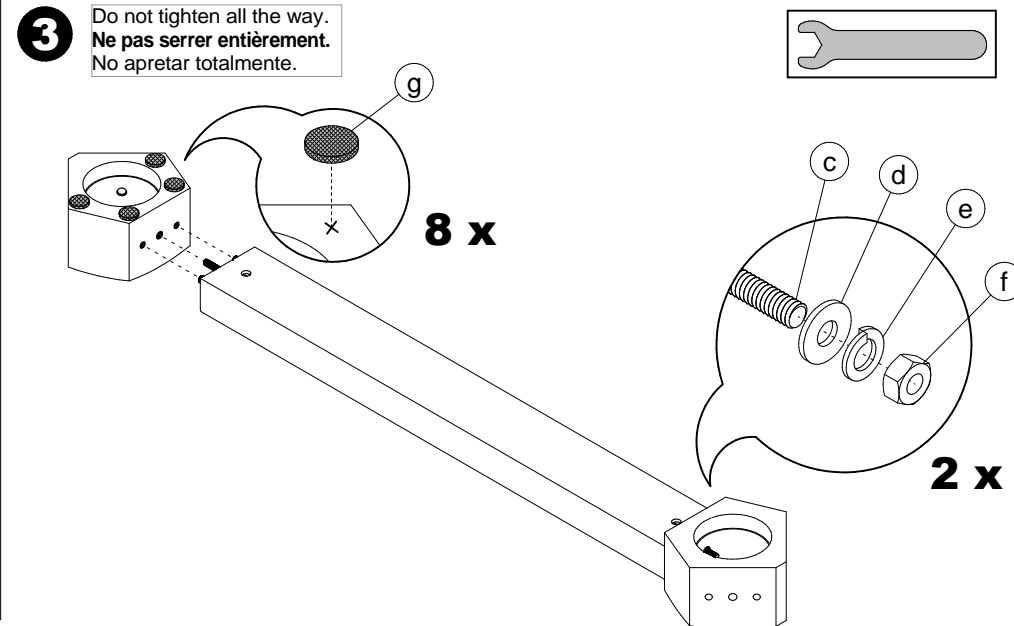
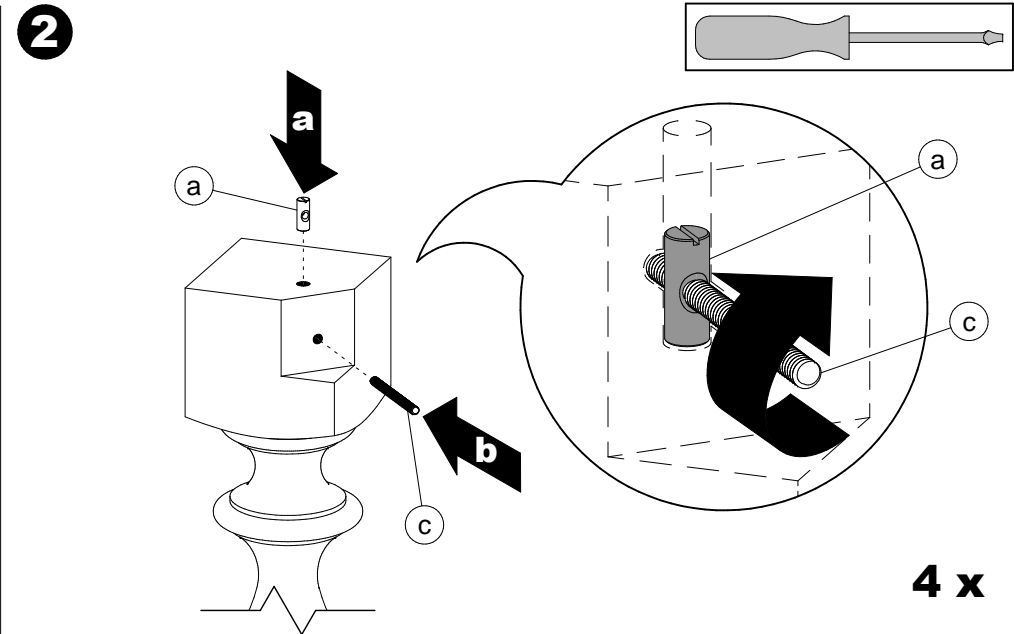
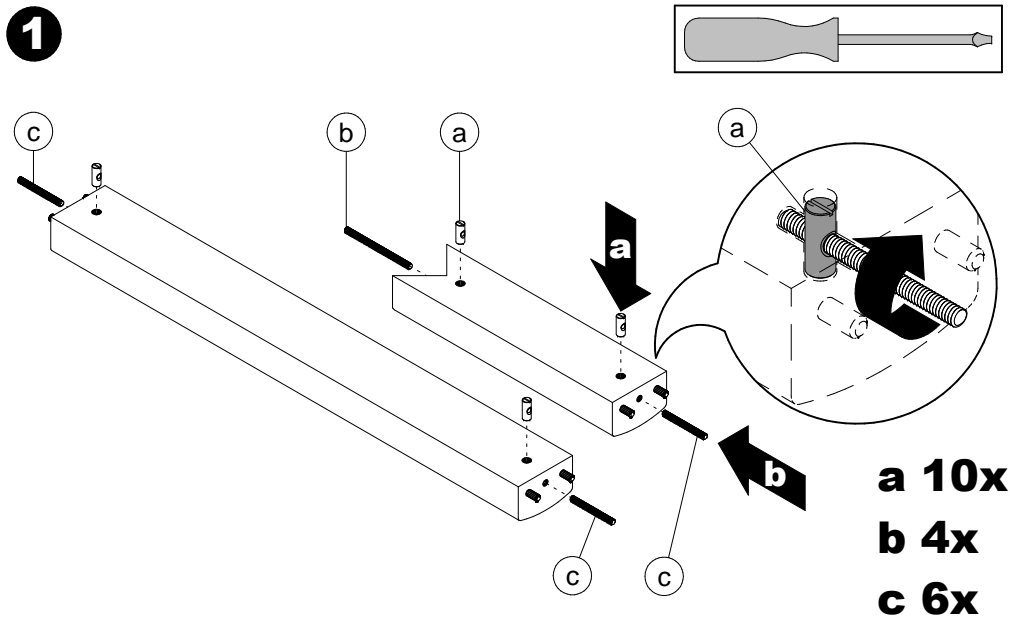
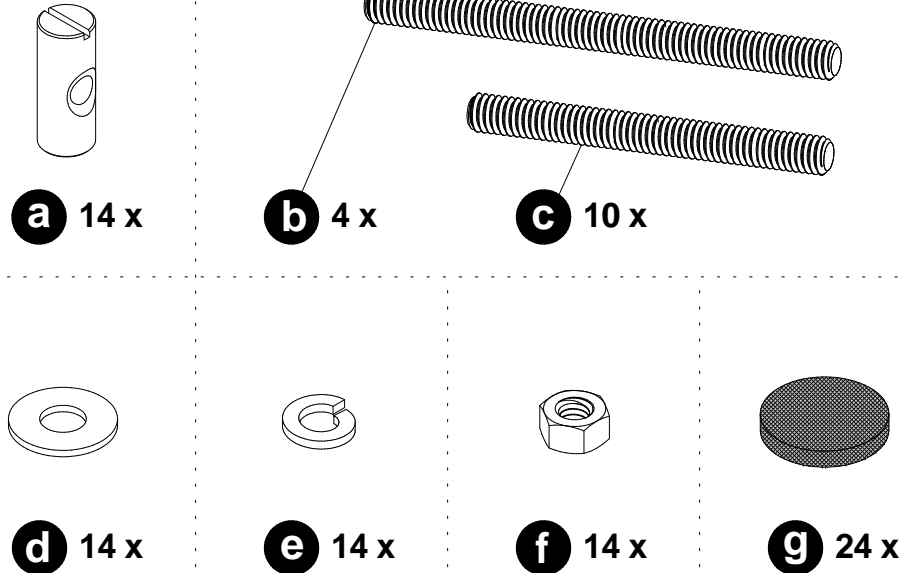


Assembly instructions for pedestal table with legs

Principe d'assemblage d'une table à base avec pattes

Procedimiento de ensamblaje de una mesa con patas

It is suggested to use 2 people to assemble the table.
 Il est suggéré d'être à deux pour assembler la table.
 Se sugiere ensamblar la mesa entre 2 personas.



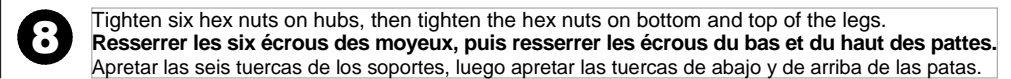
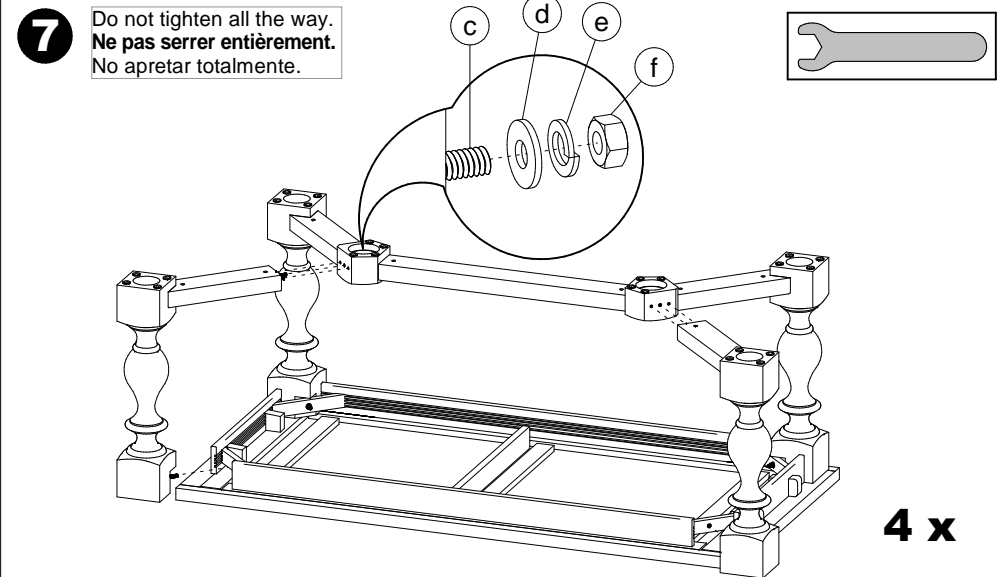
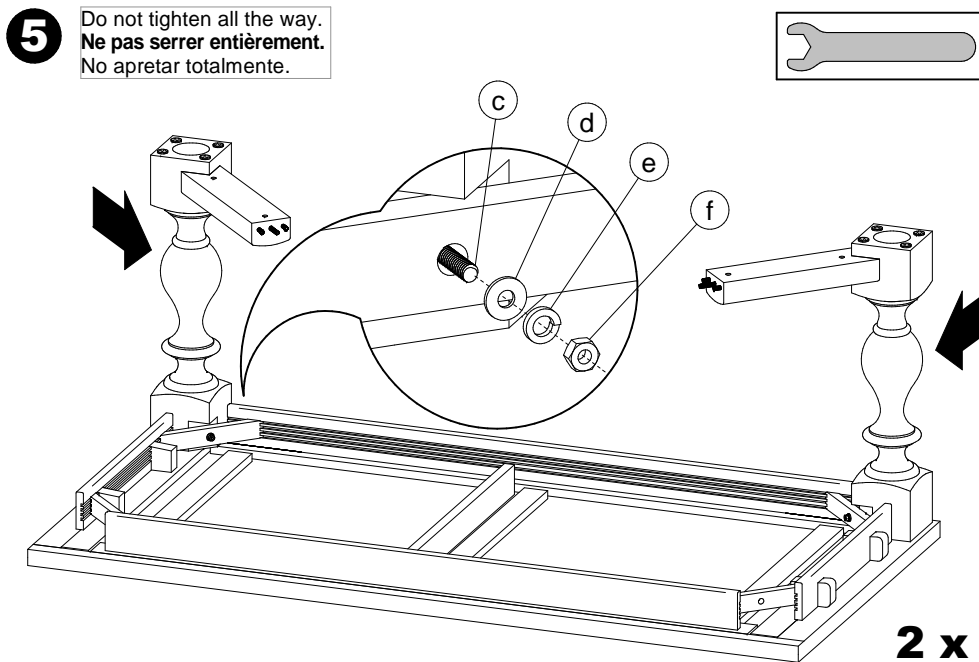
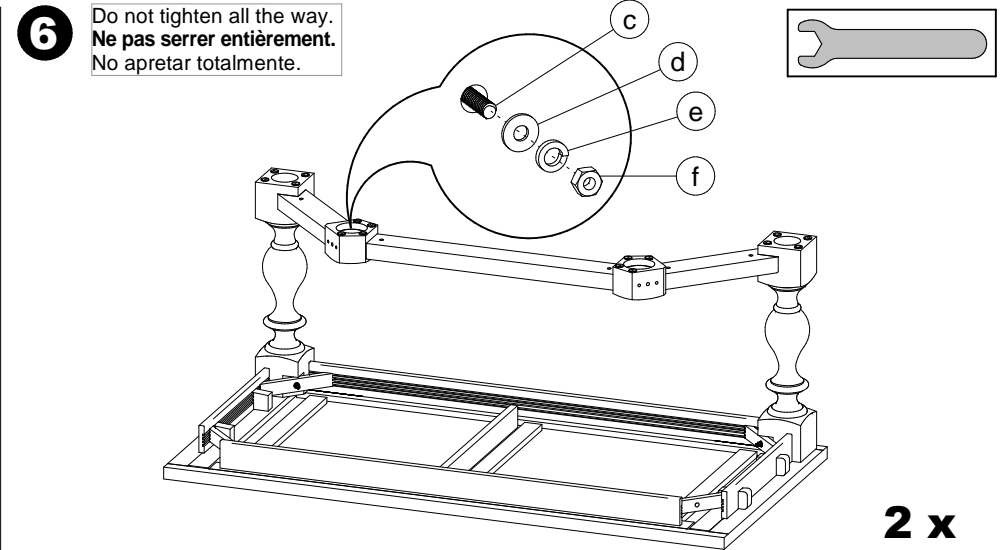
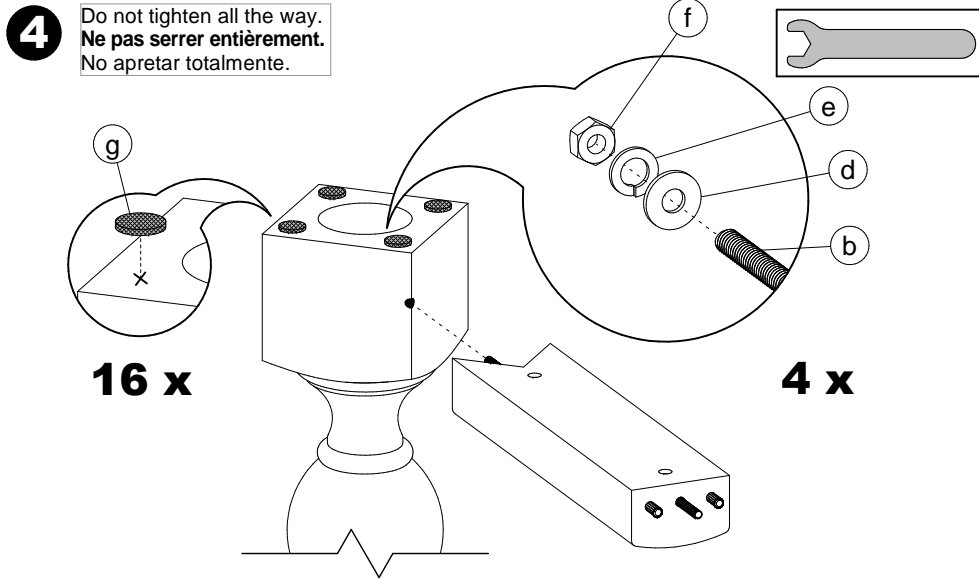
Assembly instructions for pedestal table with legs

Principe d'assemblage d'une table à base avec pattes

Procedimiento de ensamblaje de una mesa con patas



Do not climb on the table.
Risk of serious injuries.
Ne pas monter sur la table.
Risque de blessures graves.
No treparse sobre la mesa.
Riesgo de herirse gravemente.



| | | |
|-------------------------------|------------------------|------------|
| CODE PRODUIT SAC: | QUI2SACZ038 | |
| CODE PRODUIT INFO-CLIENT: | FOP2INZTAB-1038 | |
| REVISION: | P01 | |
| DESCRIPTION | NOM | QTÉ |
| BARREL NUT 5/16-18 X 30MM | FOAVISZCD5-16-18X30MM | 14 |
| ECROU 5/16-18 ZINC | FOAVISZHN5-16-18 | 14 |
| LOCK WASHER 5/16 ZINC | FOAVISZLW 5-16 | 14 |
| TIGE FILETÉE 5/16-18 X 3 3/4" | FOAVISZTF5-16-18X3 3-4 | 10 |
| TIGE FILETÉE 5/16-18 X 4 3/4" | FOAVISZTF5-16-18X4 3-4 | 4 |
| WASHER 5/16 (STD) ZINC | FOAVISZWAS3-8H 5-16B | 14 |
| FEUTRE COLLANT DIA. 1" | QUIACCZFEUTREV23125 | 24 |