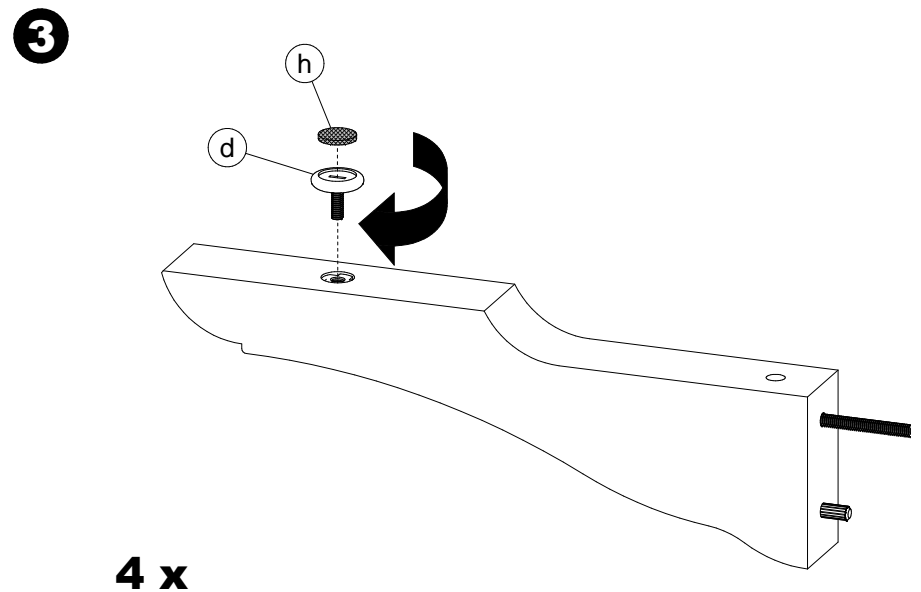
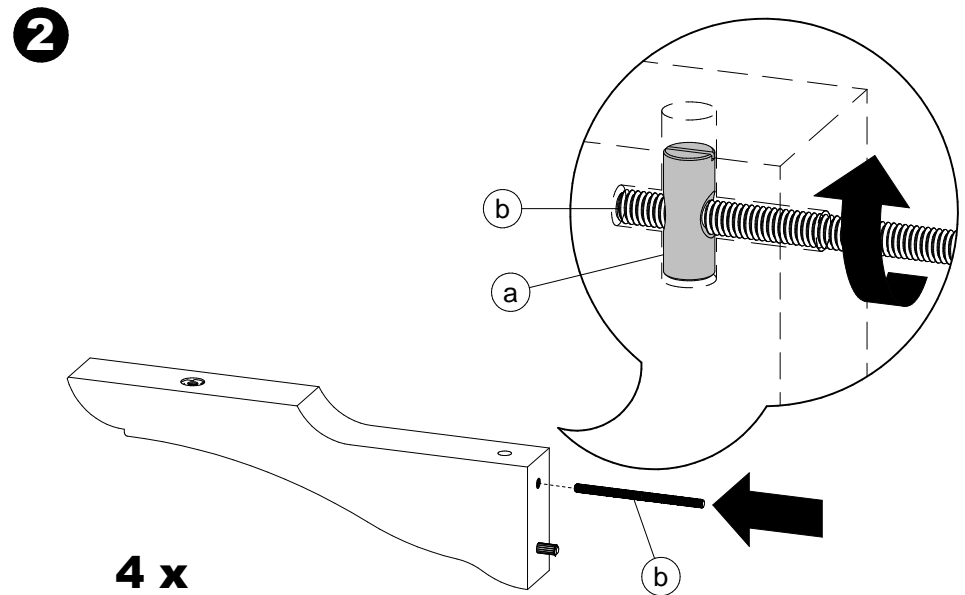
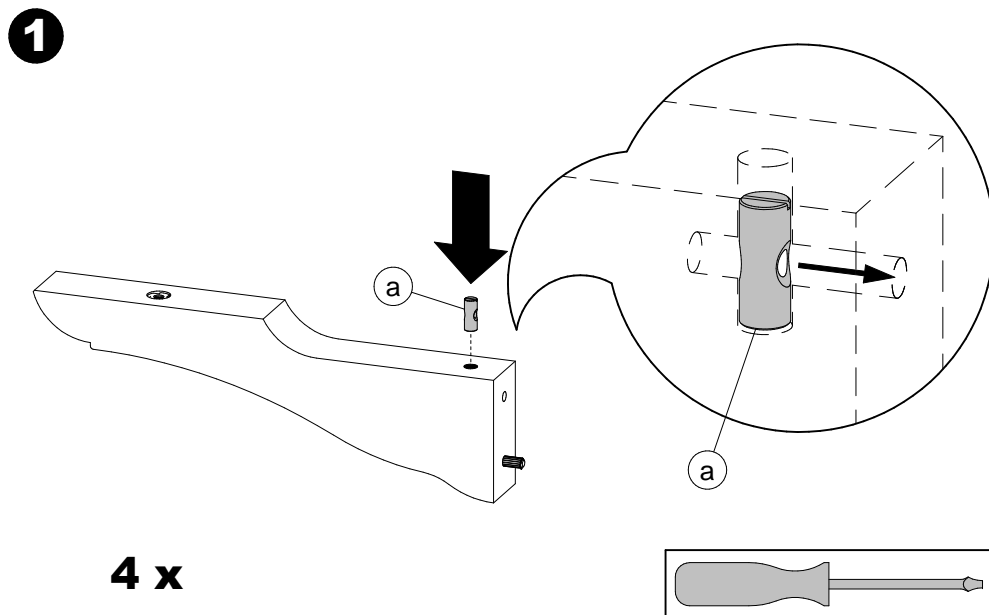
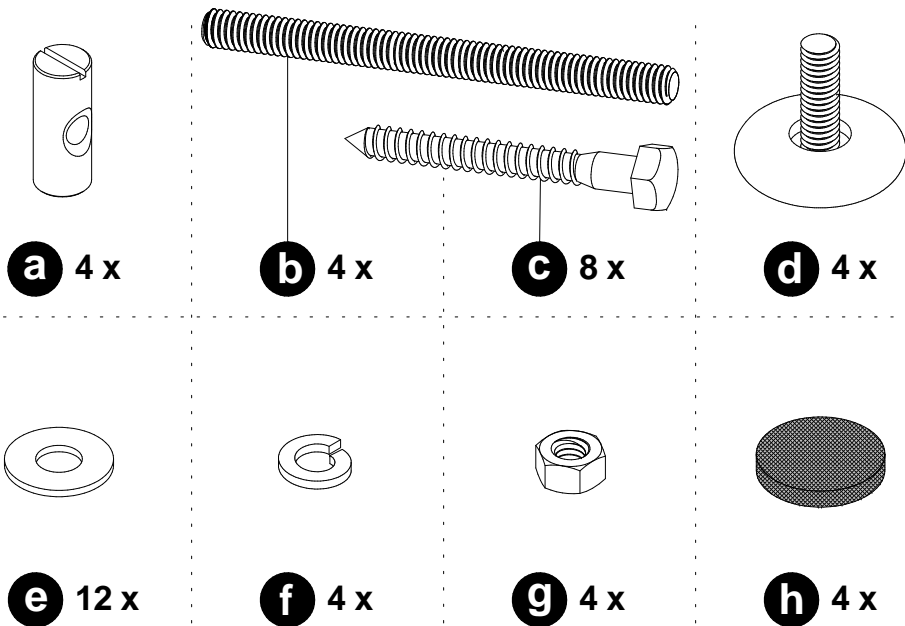


Assembly method for a single pedestal table
Principe d'assemblage d'une table à base simple
Instrucciones de ensamblaje de una mesa con base simple



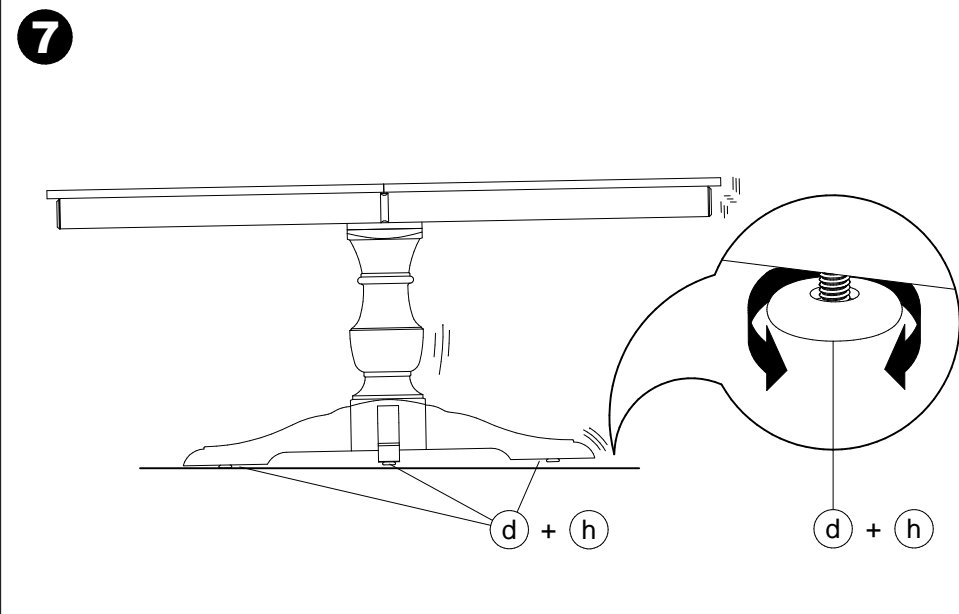
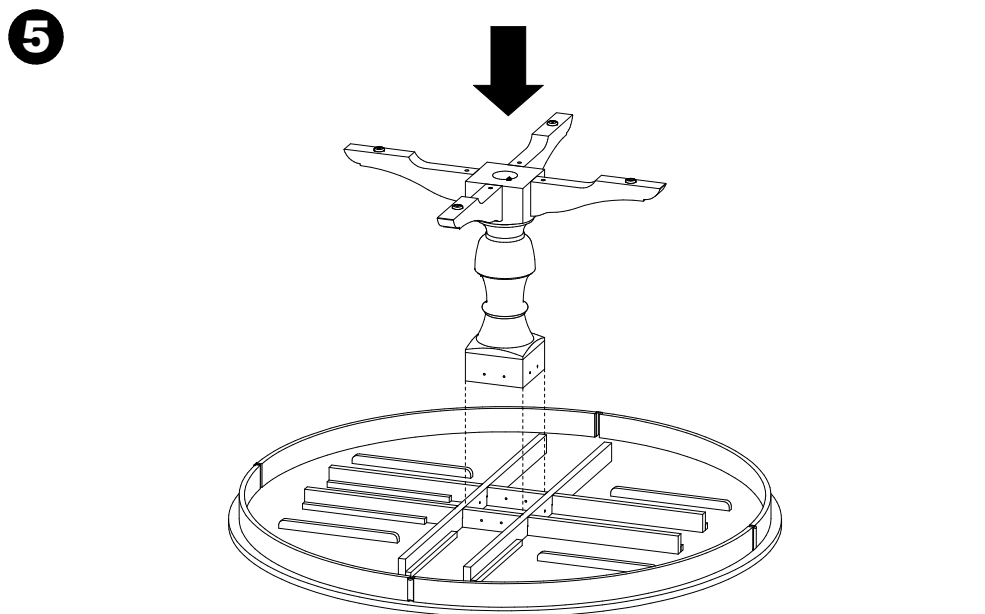
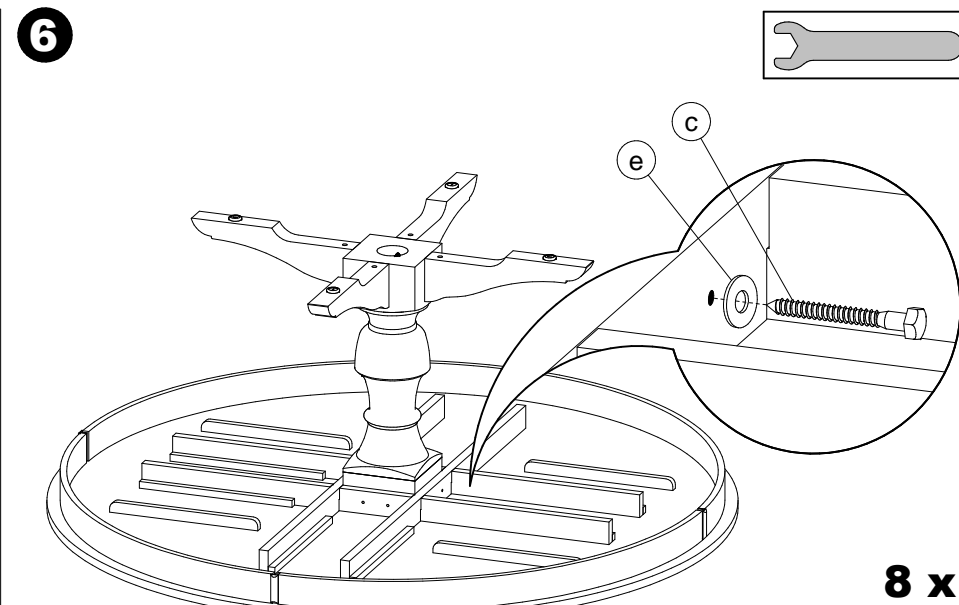
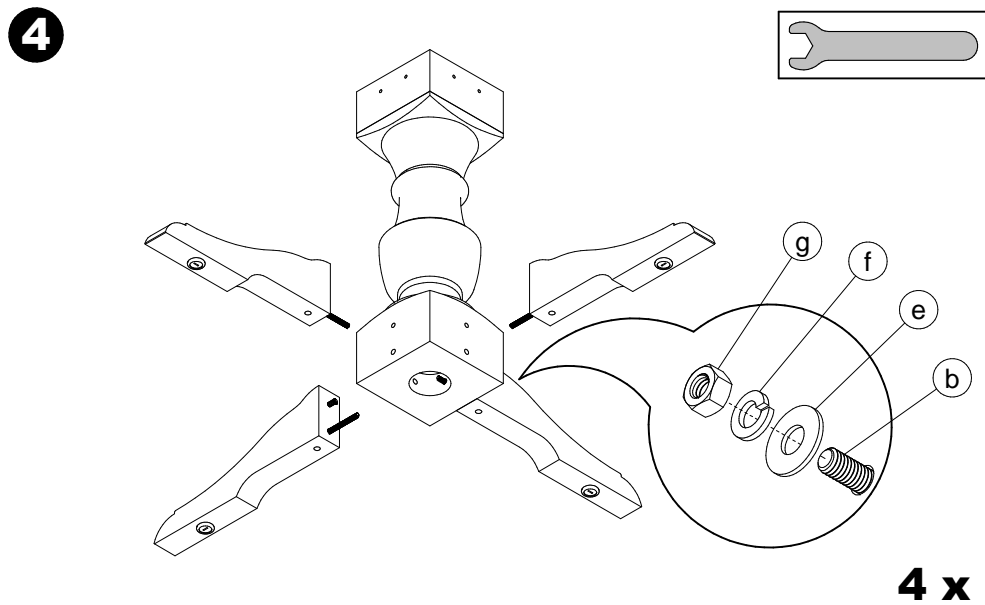
Assembly method for a single pedestal table

Principe d'assemblage d'une table à base simple

Instrucciones de ensamblaje de una mesa con base simple



Do not climb on the table.
Risk of serious injuries.
Ne pas monter sur la table.
Risque de blessures graves.
No treparse sobre la mesa.
Riesgo de herirse gravemente.



CODE PRODUIT SAC:	QUI2SACZ029	
CODE PRODUIT INFO-CLIENT:	FOP2INZTAB-1029	
REVISION:	P01	
DESCRIPTION	NOM	QTÉ
BARREL NUT 5/16-18 X 30MM	FOAVISZCD5-16-18X30MM	4
ECROU 5/16-18 ZINC	FOAVISZHN5-16-18	4
LAG BOLT 5/16 X 2 1/2"	FOAVISZLB5-16X2 1-2	8
LOCK WASHER 5/16 ZINC	FOAVISZLW 5-16	4
TIGE FILETÉE 5/16-18 X 5"	FOAVISZTF5-16-18X5	4
WASHER 5/16 (STD) ZINC	FOAVISZWAS3-8H 5-16B	12
NIVELEUR DIA1 3/8"; 5/16-18X7/8"	QUIACCZ00701C	4
FEUTRE COLLANT DIA. 1"	QUIACCZFEUTREV23125	4